



**India Meteorological Department
(Ministry of Earth Sciences)**

BULLETIN NO. 1 (BOB/07/2022)

TIME OF ISSUE:1300 HOURS IST

DATED: 22.10.2022

FROM: INDIA METEOROLOGICAL DEPARTMENT (FAX NO. 24643965/24699216/24623220)

TO: CONTROL ROOM, NDM, MINISTRY OF HOME AFFAIRS (FAX.NO. 23093750)

CONTROL ROOM NDMA (FAX.NO. 26701729)

CABINET SECRETARIAT (FAX.NO.23012284, 23018638)

PS TO HON'BLE MINISTER FOR S & T AND EARTH SCIENCES (FAX NO.23316745)

SECRETARY, MOES (FAX NO. 24629777)

H.Q. (INTEGRATED DEFENCE STAFF AND CDS) (FAX NO. 23005137/23005147)

DIRECTOR GENERAL, DOORDARSHAN (23385843)

DIRECTOR GENERAL, AIR (23421105, 23421219)

PIB MOES (FAX NO. 23389042)

UNI (FAX NO. 23355841)

D.G. NATIONAL DISASTER RESPONSE FORCE (NDRF) (FAX NO. 26105912, 2436 3260)

DIRECTOR, PUNCTUALITY, INDIAN RAILWAYS (FAX NO. 23388503)

CHIEF SECRETARY, ANDAMAN & NICOBAR ISLANDS (FAX NO. 03192- 232656)

CHIEF SECRETARY, GOVT. WEST BENGAL (FAX NO. 033-22144328)

CHIEF SECRETARY, GOVT. OF ODISHA (FAX NO. 0674 -2536660)

CHIEF SECRETARY, GOVT. OF ASSAM (FAX NO. 0361-2237200)

CHIEF SECRETARY, GOVT. OF MEGHALAYA (FAX NO. 0364-2225978)

CHIEF SECRETARY, GOVT. OF NAGALAND (FAX NO. 0370-2270057)

CHIEF SECRETARY, GOVT. OF MIZORAM (FAX NO. 0389 2322745)

CHIEF SECRETARY, GOVT. OF MANIPUR (FAX NO. NA)

CHIEF SECRETARY, GOVT. OF TRIPURA (FAX NO. 0381-2414013/ 2351122)

CHIEF SECRETARY, GOVT. OF ARUNACHAL PRADESH (FAX NO. 0360-2212466, 2215719)

CHIEF SECRETARY, GOVT. OF ANDHRA PRADESH (FAX NO. 0863-2441029, 08645-246600)

CHIEF SECRETARY, GOVT. OF TAMIL NADU (FAX NO. 044-25672304)

CHIEF SECRETARY, GOVT. OF PUDUCHERRY (FAX NO. 0413-2337575, 2334145)

Subject: Depression over southeast & adjoining eastcentral Bay of Bengal close to west of Andaman Islands (Pre-Cyclone Watch: West Bengal coast)

Yesterday's Low Pressure Area over north Andaman Sea and adjoining areas of south Andaman Sea & Southeast Bay of Bengal moved west-northwestward and concentrated into a depression in the morning at 0830 IST of today, the 22nd October, 2022 over southeast adjoining eastcentral Bay of Bengal, close to west of Andaman Islands near latitude 12.7⁰N and longitude 92.4⁰E, about 110 km north-northwest of Port Blair, 1460 km south-southeast of Sagar Island and 1130 km south-southeast of Barisal (Bangladesh).

It is very likely to move northwestward and intensify further into a Deep Depression over eastcentral and adjoining southeast bay of Bengal by 23rd October morning. Subsequently, it is very likely to recurve gradually north-northeastwards and intensify into a cyclonic storm over central Bay of Bengal by 24th October morning. Thereafter, it would continue to move north-northeastwards and cross Bangladesh coast between Tinkona Island and Sandwip around 25th October early morning.

Forecast track and intensity are given below:

Date/Time(IST)	Position (Lat. °N/ long. °E)	Maximum sustained surface wind speed (Kmph)	Category of cyclonic disturbance
22.10.22/0830	12.7/92.4	40-50 gusting to 60	Depression
22.10.22/1730	14.2/90.2	45-55 gusting to 65	Depression
23.10.22/0530	15.2/88.7	55-65 gusting to 75	Deep Depression
23.10.22/1730	16.3/88.2	60-70 gusting to 80	Cyclonic Storm
24.10.22/0530	18.2/88.4	70-80 gusting to 90	Cyclonic Storm
24.10.22/1730	20.3/89.3	80-90 gusting to 100	Cyclonic Storm
25.10.22/0530	21.9/90.2	90-100 gusting to 110	Cyclonic Storm
25.10.22/1730	24.0/91.6	50-60 gusting to 70	Deep Depression

Warnings:

(i) Rainfall (warning graphics enclosed)

Andaman and Nicobar Islands: Light to moderate rainfall at most places with heavy rainfall at isolated places over Andaman & Nicobar Islands during on 22nd & 23rd October.

Odisha: Light to moderate rainfall at many places likely over coastal districts of Odisha on 23rd and light to moderate rainfall with isolated heavy rainfall likely over the same region on 24th and isolated heavy rainfall over north coastal Odisha districts on 25th October

West Bengal: Light to moderate rainfall at a few places likely over coastal districts of West Bengal on 23rd. Light to moderate rainfall with isolated heavy rainfall on 24th and heavy to very heavy rainfall at isolated places on 25th likely over coastal districts.

Northeastern States:

Light to moderate rainfall at most places with heavy to very heavy rainfall at isolated places over south Assam, East Meghalaya, Nagaland, Mizoram, Manipur & Tripura on 24th October. Light to moderate rainfall at most places with isolated heavy to very heavy rainfall over the same region and isolated extremely heavy rainfall over Tripura & Mizoram likely over the same region on 25th and isolated heavy rainfall likely on 26th October.

(ii) Wind warning:

22nd October: Squally weather with wind speed reaching 45-55 kmph gusting to 65 kmph is very likely over eastcentral & adjoining southeast Bay of Bengal, Andaman Islands and Andaman Sea.

23rd October: Squally wind speed reaching 55-65 kmph gusting to 75 kmph is very likely over westcentral and adjoining eastcentral & southeast Bay of Bengal from morning. It would gradually increase becoming 65-75 kmph gusting to 85 kmph from 23rd evening. Squally wind speed reaching 35-45 kmph gusting to 55 kmph is very likely along & off Odisha and West Bengal coasts and Andaman Islands and adjoining north Andaman Sea.

24th October: Gale wind speed reaching 70-80 kmph gusting to 90 kmph is likely over westcentral and adjoining areas of eastcentral & north Bay of Bengal. Squally wind speed reaching 45-55 kmph gusting to 65 kmph is very likely along & off Odisha and West Bengal coasts.

25th October: Gale wind speed reaching 90-100 kmph gusting to 110 kmph is likely over north and adjoining central Bay of Bengal and along & off Bangladesh coast; 80-90 kmph gusting to 100 kmph likely along & off 24 Parganas District and 60-70 kmph gusting to 80 kmph along & off

east Medinipur district off West Bengal coast. Squally wind speed reaching 50-60 kmph gusting to 70 kmph likely along and off Balasore district & 45-55 kmph gusting to 65 kmph along & off remaining north coastal districts of Odisha and over Mizoram & Tripura.

(iii) Sea condition

22nd October: Rough to very rough over eastcentral & adjoining southeast Bay of Bengal & north Andaman Sea.

23rd October: Very rough over westcentral and adjoining eastcentral & southeast Bay of Bengal from morning. It would become high from evening over westcentral and adjoining eastcentral Bay of Bengal. Rough along & off Odisha-West Bengal-Bangladesh coasts.

24th October: High over westcentral and adjoining eastcentral & north Bay of Bengal. Rough to very rough along & off Odisha-West Bengal-Bangladesh coasts.

25th October: High over north Bay of Bengal along & off Bangladesh-West Bengal coasts.

(iv) Fishermen Warning (warning graphics enclosed)

Fishermen are advised not to venture into southeast & adjoining eastcentral Bay of Bengal & North Andaman Sea on 22nd; central Bay of Bengal on 23rd, central & adjoining north Bay of Bengal on 24th, north & adjoining central Bay of Bengal on 25th October, 2022.

Fishermen are advised not to venture into Sea along and off Odisha, West Bengal & Bangladesh coasts during 23rd to 25th October. Fishermen out at sea are advised to return to the coast.

(v) Advisory for On-shore and Off-shore Installations

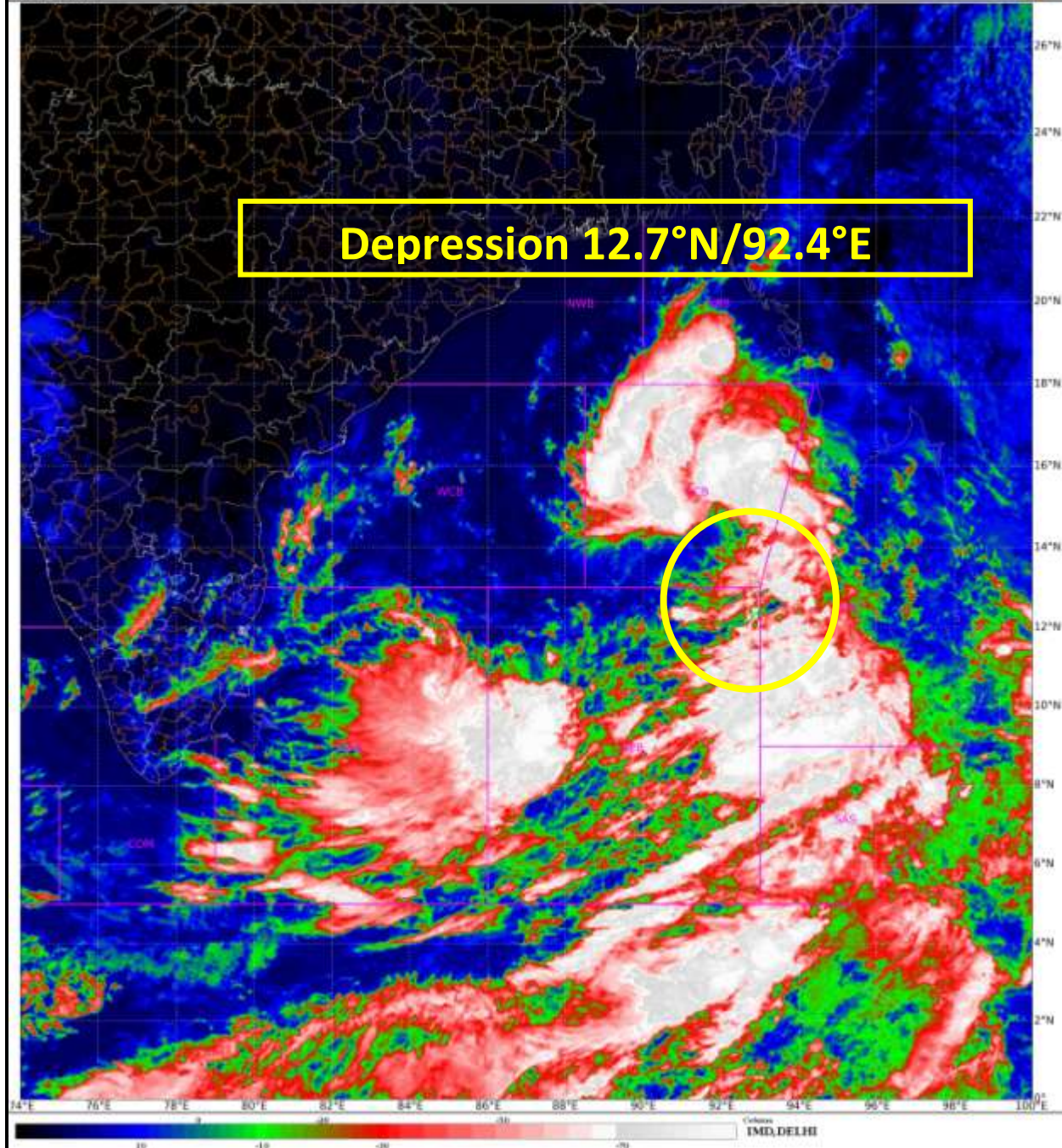
Regulation of offshore activities from 22nd over central and North Bay of Bengal till 25th and over Andaman Sea till 23rd. Suspension of off-shore activities during 24th to 25th October along and off Odisha and West Bengal coasts.

The system is under continuous surveillance and the next message will be issued at 1430 hours IST of today, the 22nd October, 2022.

(Ananda Kumar Das)
Scientist E, Cyclone Warning, New Delhi

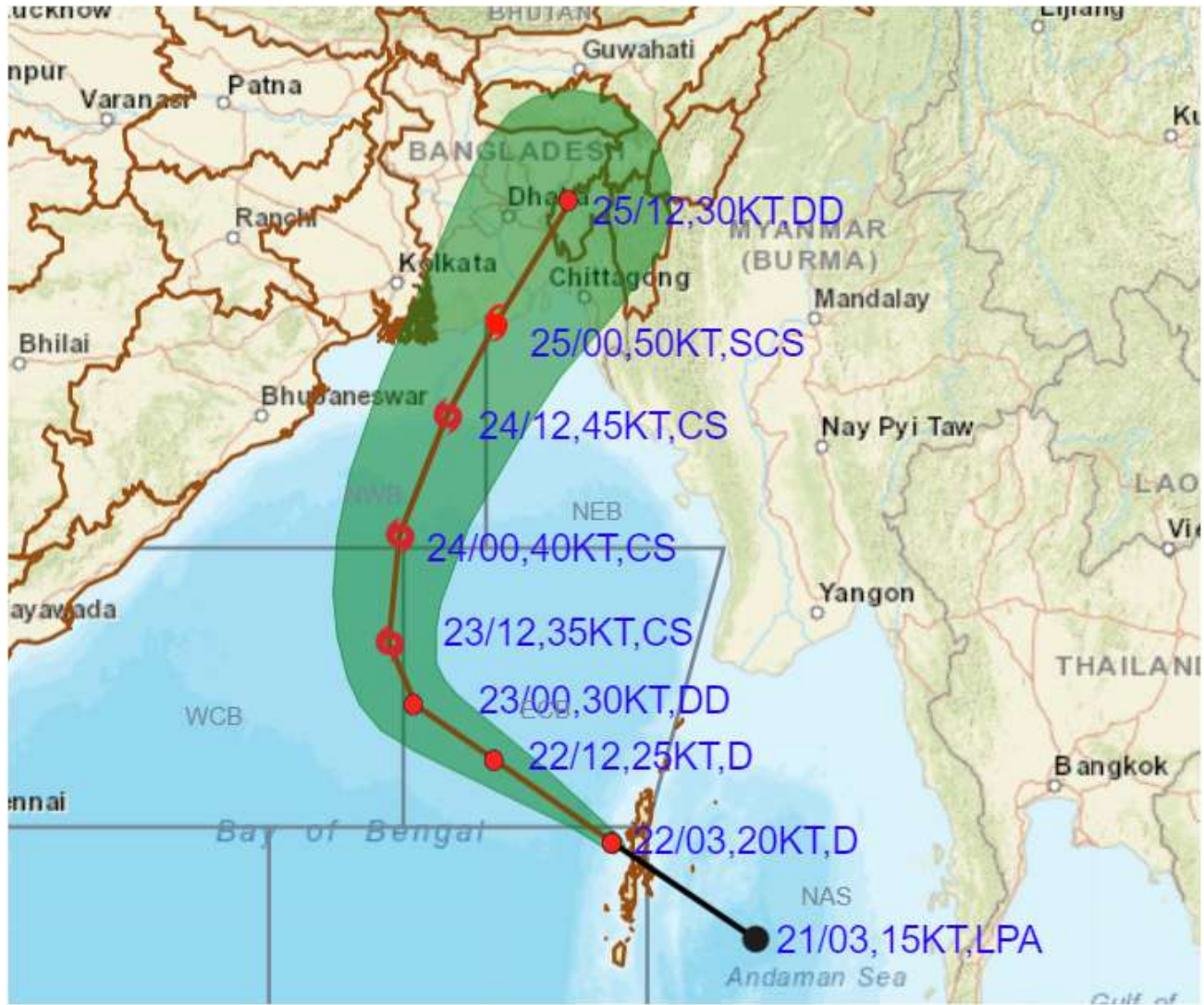
Copy to: ACWC Kolkata/ ACWC Chennai/ CWC Bhubaneswar/CWCVisakhapatnam/MO Port Blair

LEGEND: Heavy Rainfall: 64.5 to 115.5mm, **Very Heavy Rainfall:** 115.6 to 204.4mm **Most Places:** more than 76% of total stations, **Isolated Places:** Less than 25% of total





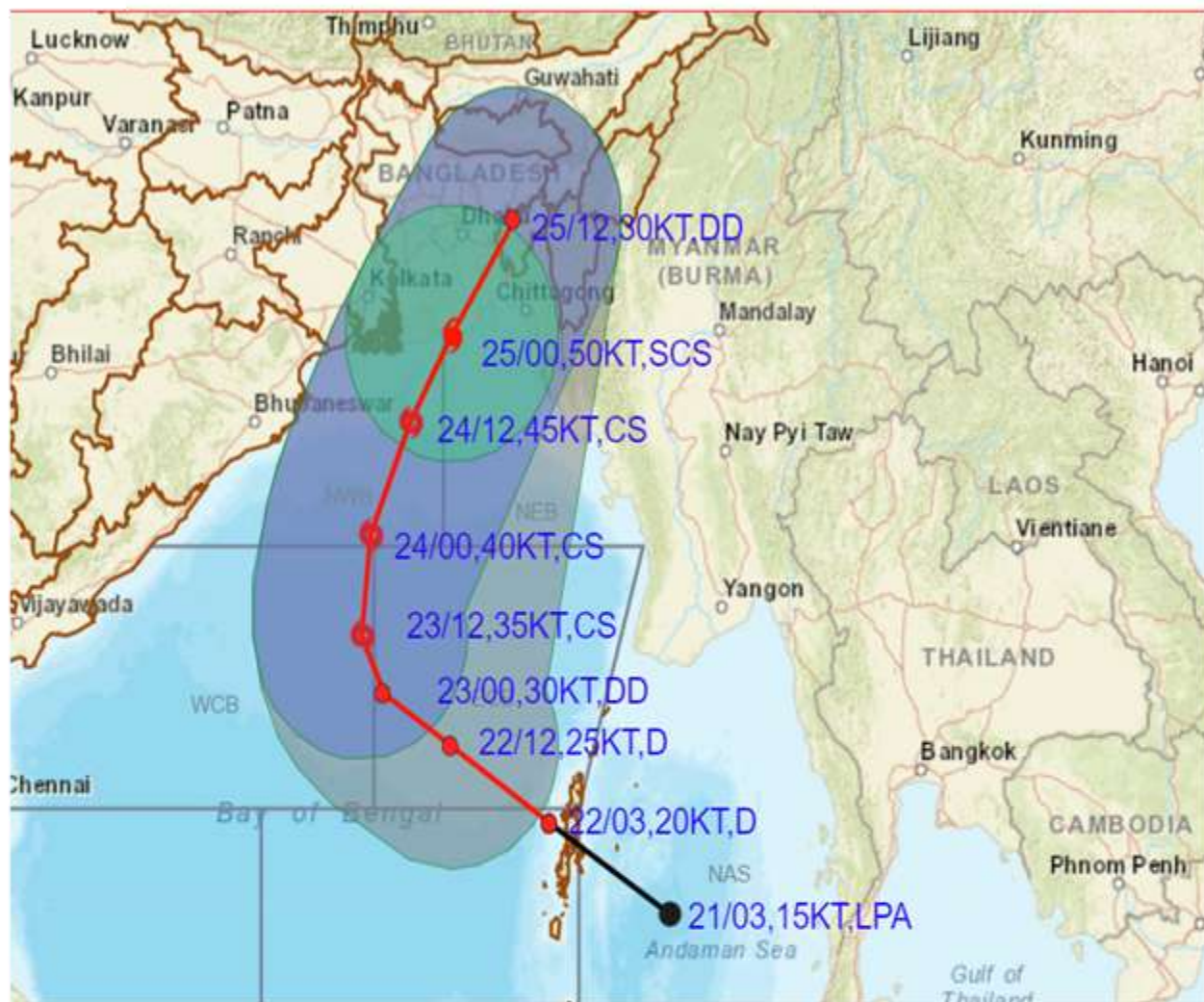
OBSERVED AND FORECAST TRACK ALONGWITH CONE OF UNCERTAINTY OF DEPRESSION OVER SOUTHEAST AND ADJOINING EASTCENTRAL BAY OF BENGAL NEAR ANDAMAN ISLANDS BASED ON 0300 UTC OF 22nd OCTOBER, 2022



DATE/TIME IN UTC
 IST=UTC + 0530
 L: LOW PRESSURE AREA
 WML: WELL MARKED LOW PRESSURE AREA
 D: DEPRESSION (17-27 KT)
 DD: DEEP DEPRESSION (28-33 KT)
 CS: CYCLONIC STORM (34-47 KT)
 SCS: SEVERE CYCLONIC STORM (48-63KT)
 VSCS: VERY SEVERE CYCLONIC STORM (64-89 KT)
 ESCS: EXTREMELY SEVERE CYCLONIC STORM (90-119 KT)
 SuCS: SUPER CYCLONIC STORM (\geq 120 KT)

- LESS THAN 34 KT
- 34-47 KT
- \geq 48 KT
- OBSERVED TRACK
- FORECAST TRACK
- CONE OF UNCERTAINTY

OBSERVED AND FORECAST TRACK ALONGWITH CONE OF UNCERTAINTY OF DEPRESSION OVER SOUTHEAST AND ADJOINING EASTCENTRAL BAY OF BENGAL NEAR ANDAMAN ISLANDS BASED ON 0300 UTC OF 22nd OCTOBER, 2022



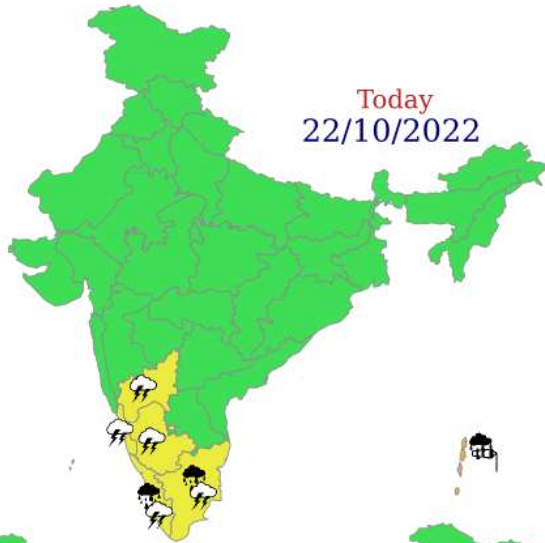
DATE/TIME IN UTC
 IST=UTC + 0530
 L: LOW PRESSURE AREA
 WML: WELL MARKED LOW PRESSURE AREA
 D: DEPRESSION (17-27 KT)
 DD: DEEP DEPRESSION (28-33 KT)
 CS: CYCLONIC STORM (34-47 KT)
 SCS: SEVERE CYCLONIC STORM (48-63KT)
 VSCS: VERY SEVERE CYCLONIC STORM (64-89 KT)
 ESCS: EXTREMELY SEVERE CYCLONIC STORM (90-119 KT)
 SuCS: SUPER CYCLONIC STORM (≥ 120 KT)

● LESS THAN 34 KT
 ○ 34-47 KT
 ● ≥ 48 KT
 — OBSERVED TRACK
 — FORECAST TRACK
 — CONE OF UNCERTAINTY
 AREA OF MAXIMUM SUSTAINED WIND SPEED:
 ■ 28-33 KT (52-61 KMPH)
 ■ 34-49 KT (62-91 KMPH)
 ■ 50-63 KT (92-117 KMPH)
 ■ ≥ 64 KT (≥118 KMPH)

IMPACT OVER THE SEA

MSW (knot/kmph)	Impact	Action
28-33 (52-61)	Very rough seas	Total suspension of fishing operations
34-49 (62-91)	High to very high seas	Total suspension of fishing operations
50-63 (92-117)	Very high seas	Total suspension of fishing operations
≥ 64 (≥118)	Phenomenal	Total suspension of fishing operations

Today
22/10/2022



WARNING



Tomorrow
23/10/2022



24/10/2022



25/10/2022



26/10/2022



Heavy Rain



Heavy Snow



Thunderstorm



Dust Storm



Strong Winds



Visibility



Cyclone



Squall/ Hail



Frost



Cold Wave



Heat Wave



Sea State